

Lime Close
Stevenage | SG2 9QB

AGENT HYBRID

Guide Price £250,000



We are pleased to present this move-in ready One Bedroom Mid-Terraced Home, ideally situated in the popular Poplars area of Stevenage. Perfect for first-time buyers or investors, the property offers well-planned accommodation throughout. A PVC front door opens into the entrance lobby, with a glazed door leading into a generously sized lounge, complete with useful under-stair storage. A fully glazed rear door provides access to the garden, while an open archway flows through to the kitchen. The kitchen is fitted with stylish cream shaker-style units and offers space for a washing machine and a tall fridge/freezer. From the lounge, stairs rise to the first-floor landing, where you'll find two handy storage cupboards. Doors lead to the bathroom and a spacious bedroom, which features a recessed open wardrobe area above the stairs. Externally, the low-maintenance rear garden enjoys a private setting, featuring a decked seating area and artificial lawn. An allocated parking space for one car is located directly to the front. Viewing is highly recommended to fully appreciate.

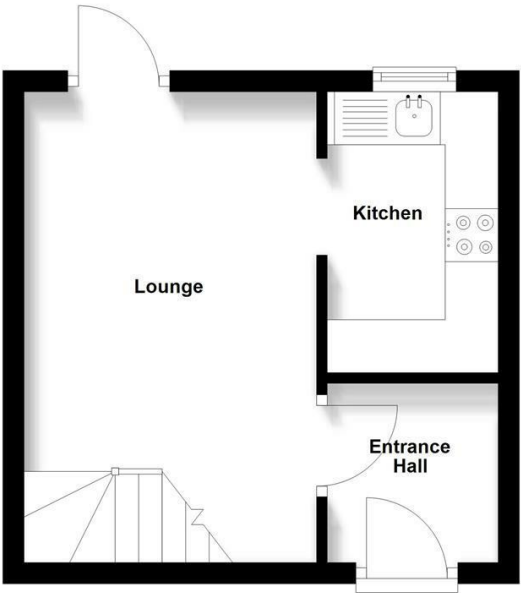
DIMENSIONS

- Entrance Lobby 5'4 x 5'2
- Lounge 14'6 x 9'1
- Kitchen 8'7 x 5'8
- Bedroom 10'9 x 9'3
- Bathroom 7'9 x 4'9

Energy Efficiency Rating		
	Current	Potential
Very energy efficient - lower running costs		
(92 plus) A		91
(81-91) B		
(69-80) C	72	
(55-68) D		

Ground Floor

Approx. 19.9 sq. metres (214.1 sq. feet)



First Floor

Approx. 19.9 sq. metres (214.1 sq. feet)



Total area: approx. 39.8 sq. metres (428.2 sq. feet)

IMPORTANT: We would like to inform prospective purchasers that these sales particulars have been prepared as a general guide only. A details survey has not been carried out, not the service, appliances and fittings tested. Room sizes should not be relied upon for furnishing purposed and are approximate. If floor plans are included, they are for guidance and illustration purposes only and may not be to scale. If there are any important matters likely to affect your decision to buy, please contact us before viewing the property.

Agent Hybrid
57 High Street, Stevenage, Hertfordshire, SG1 3AQ
Tel: 01438 870673 - enquiries@agenthybrid.co.uk
www.agenthybrid.co.uk

AGENT HYBRID